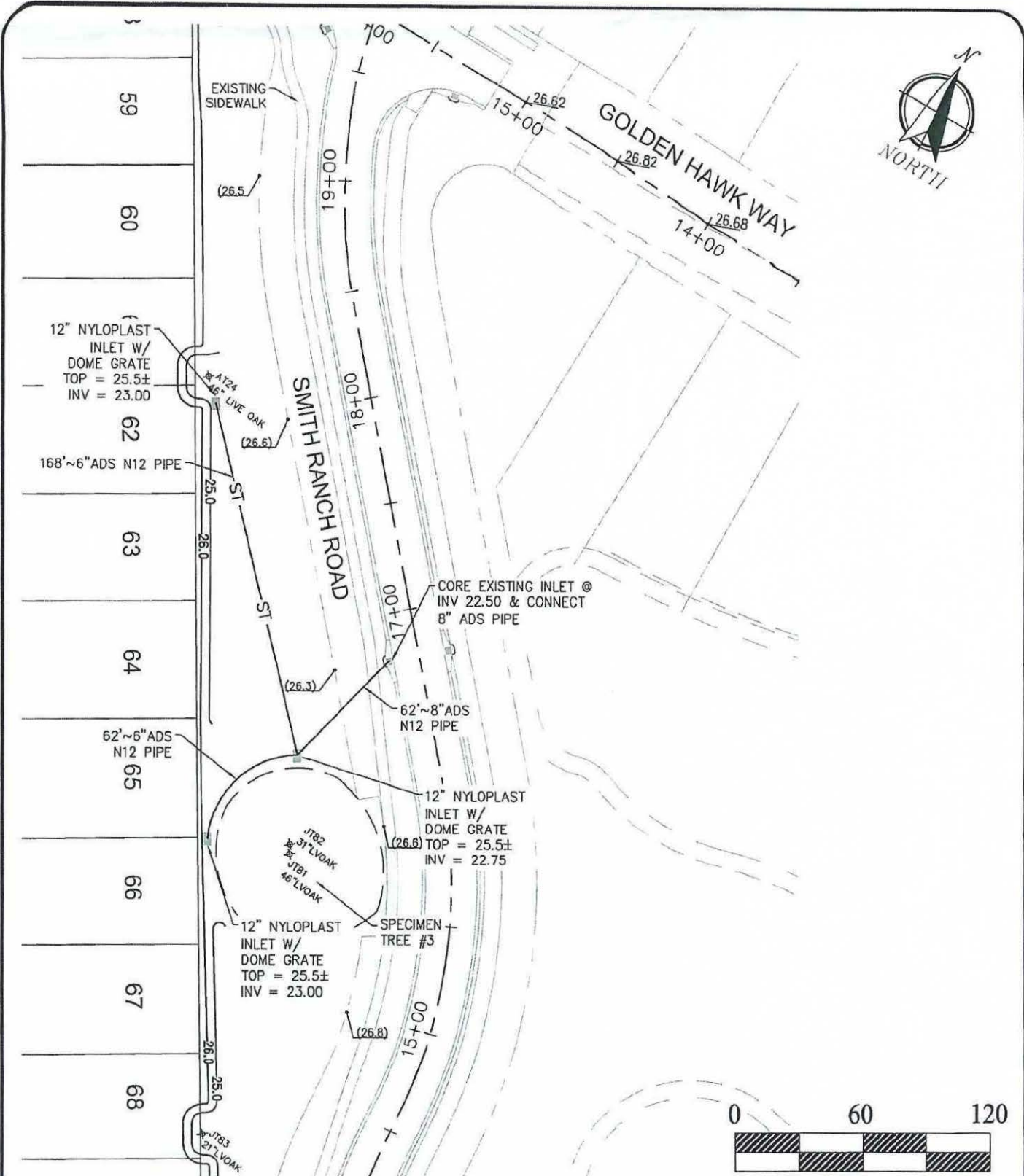




# GRAND OAKS CDD

## Engineers Opinion of Probable Construction Costs

	Description	Quantity	Unit Price	Unit	Total Price
<b>1.0 OAK TREE DRAINAGE</b>					
1.1	12" Nyloplast Inlet W/ Dome Grate	3	\$500.00	EA	\$1,500.00
1.2	6" ADS N12 Pipe	230	\$20.00	LF	\$4,600.00
1.3	8" ADS N12 Pipe	62	\$25.00	LF	\$1,550.00
1.4	Core Into Existing Structure	1	\$2,000.00	LS	\$2,000.00
				<b>Sub Total</b>	<b>\$6,100.00</b>
<b>2.0 POND 11 IMPROVEMENTS</b>					
2.1	Clearing	0.35	\$12,000.00	ACRE	\$4,200.00
2.2	Sod Ditch	1100	\$5.00	SQ FT	\$5,500.00
2.3	Construct Swale at S106 and Sod	115	\$20.00	LF	\$2,300.00
2.4	Clean S106	1	\$1,500.00	EA	\$1,500.00
2.6	Clean Outfall Structure	1	\$1,000.00	EA	\$1,000.00
2.7	Regrade Perimeter Ditch	1620	\$12.50	LF	\$20,250.00
2.8	Install 1'X3' Slot in S106	1	\$750.00	EA	\$750.00
				<b>Sub Total</b>	<b>\$35,500.00</b>
				<b>Total</b>	<b>\$41,600.0</b>
				<b>Contingency 10%</b>	<b>\$4,160.0</b>
				<b>Total</b>	<b>\$45,760.0</b>



Z:\General Civil\Southeast Dev\Grand Oaks Phase 2\Cadd\design\PHASE 2B-1\DRN - GRAND OAKS PH2B-1.dwg (C4 (2)) 10/26/2023 11:57



PLANNERS AND ENGINEERS C.A. 26821  
 DOMINION ENGINEERING GROUP, INC.  
 4348 SOUTHPOINT BLVD., SUITE 201  
 JACKSONVILLE, FLORIDA 32216  
 904-854-4500 FAX:904-854-4505

# DRAINAGE IMPROVEMENTS

GRAND OAKS 2B-1  
 ST. JOHNS COUNTY











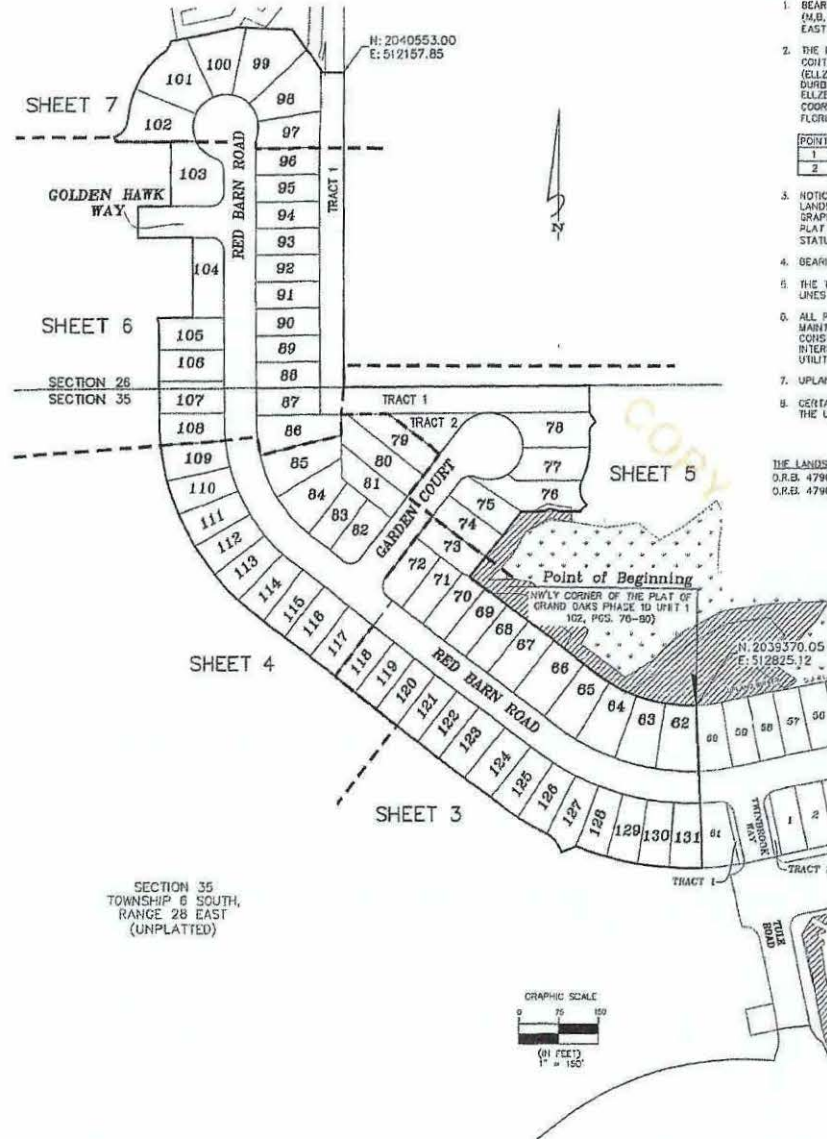




# Grand Oaks Phase 1D Unit 2

A PORTION OF SECTIONS 26 AND 35, TOWNSHIP 6 SOUTH, RANGE 28 EAST, ST. JOHNS COUNTY, FLORIDA

SHEET 2 OF 7 SHEETS  
70 LOTS AND 2 TRACTS IN THIS PHASE



### General Notes

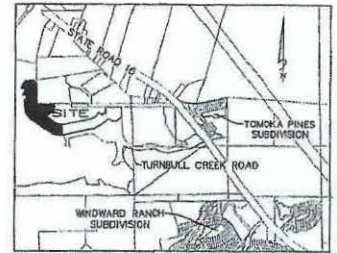
- BEARINGS SHOWN HEREON ARE BASED ON THE WLY LINE OF LOT 60 GRAND OAKS PHASE 1D UNIT 1 (M.B. 102, PGS. 76-80) AS N02°01'52"W 123.00' PER THE STATE PLANE COORDINATE SYSTEM FLORIDA EAST ZONE, NORTH AMERICAN DATUM 1983/1990 ADJUSTMENT.
  - THE INTENDED USE OF THESE COORDINATES IS FOR GIS BASE MAPPING PURPOSES. THE GEODETIC CONTROL RELIED UPON FOR THESE VALUES WAS PUBLISHED USOS CONTROL POINTS (GURDIN 2) AND (ELLZEY).
- | POINT | NORTHING   | EASTING   | DESCRIPTION           |
|-------|------------|-----------|-----------------------|
| 1     | 2039370.05 | 512825.12 | NELY CORNER OF LOT 62 |
| 2     | 2040253.00 | 512157.85 | NELY CORNER TRACT 1   |
- NOTICE: THIS PLAT, AS RECORDED IN ITS GRAPHIC FORM, IS THE OFFICIAL DEPICTION OF THE SUBDIVIDED LANDS DESCRIBED HEREON AND WILL IN NO CIRCUMSTANCES BE SUPPLANTED IN AUTHORITY BY ANY OTHER GRAPHIC OR DIGITAL FORM OF THE PLAT. THERE MAY BE RESTRICTIONS THAT ARE NOT RECORDED ON THIS PLAT THAT MAY BE FOUND IN THE PUBLIC RECORDS OF THIS COUNTY (SECTION 177.091, FLORIDA STATUTES).
  - BEARINGS AND DISTANCES SHOWN ON CURVES REFER TO CHORD BEARINGS AND DISTANCES.
  - THE TABULATED CURVE & LINE TABLE(S) SHOWN ON EACH SHEET IS APPLICABLE ONLY TO THE CURVES & LINES THAT APPEAR ON THAT SHEET.
  - ALL PLATTED UTILITY EASEMENTS SHALL ALSO BE EASEMENTS FOR THE CONSTRUCTION, INSTALLATION, MAINTENANCE, AND OPERATION OF CABLE TELEVISION SERVICES. PROVIDED HOWEVER, NO SUCH CONSTRUCTION, INSTALLATION, MAINTENANCE, AND OPERATION OF CABLE TELEVISION SERVICES SHALL INTERFERE WITH THE FACILITIES AND SERVICES OF AN ELECTRIC, TELEPHONE, GAS, OR OTHER PUBLIC UTILITY.
  - UPLAND BUFFERS ADJACENT TO WETLANDS ARE TO REMAIN NATURAL, VEGETATIVE, AND UNDISBURBED.
  - CERTAIN EASEMENTS (PPLE) ARE RESERVED FOR FLORIDA POWER & LIGHT FOR USE IN CONJUNCTION WITH THE UNDERGROUND ELECTRICAL DISTRIBUTION SYSTEM.

THE LANDS SHOWN HEREON ARE SUBJECT TO THE FOLLOWING EASEMENTS:  
 O.R.B. 4790, PAGE 15 GRANT OF EASEMENT  
 O.R.E. 4790, PAGE 45 GRANT OF TELECOMMUNICATIONS EASEMENT

BLANKETS PLATTED LANDS  
 BLANKETS PLATTED LANDS

### LEGEND

- R/W = RIGHT OF WAY
  - M.B. = MAP BOOK
  - O.R.B. = OFFICIAL RECORDS BOOK
  - PG(S) = PAGE(S)
  - PPLE = FLORIDA POWER AND LIGHT EASEMENT
  - CH = CHORD DISTANCE
  - R = RADIUS
  - Δ = DELTA ANGLE
  - L = ARC LENGTH
  - R.P. = RADIUS POINT
  - CENTRUM = CENTERLINE
  - P.C. = POINT OF CURVATURE
  - P.T. = POINT OF TANGENCY
  - M.T. = POINT OF HIGH TANGENCY
  - P.R.C. = POINT OF REVERSE CURVATURE
  - T.L.D. = THE LINE ONLY
  - (R) = RADIAL LINE
  - PUDE = PRIVATE UNOBSERVED DRAINAGE EASEMENT
  - CI = TABULATED CURVE DATA
  - LI = TABULATED LINE DATA
  - ATB = APPROXIMATE TOP OF BANK
  - S.J.W.L. = STATE JURISDICTIONAL WETLAND LINE
  - U.D.&A.E. = UNOBSERVED DRAINAGE AND ACCESS EASEMENT
- = PERMANENT CONTROL POINT STAMPED P.O.P. LB 5731
  - = 4"x4" CONCRETE MONUMENT STAMPED P.R.M. LB 5731
  - = 5/8" REBAR WITH CAP P.R.M. LB 5731
  - = APPROXIMATE TOP OF BANK
  - = JURISDICTIONAL WETLANDS
  - = DENOTES UPLAND BUFFER (NATURAL VEGETATIVE UPLAND BUFFER) 25' AVERAGE WIDTH

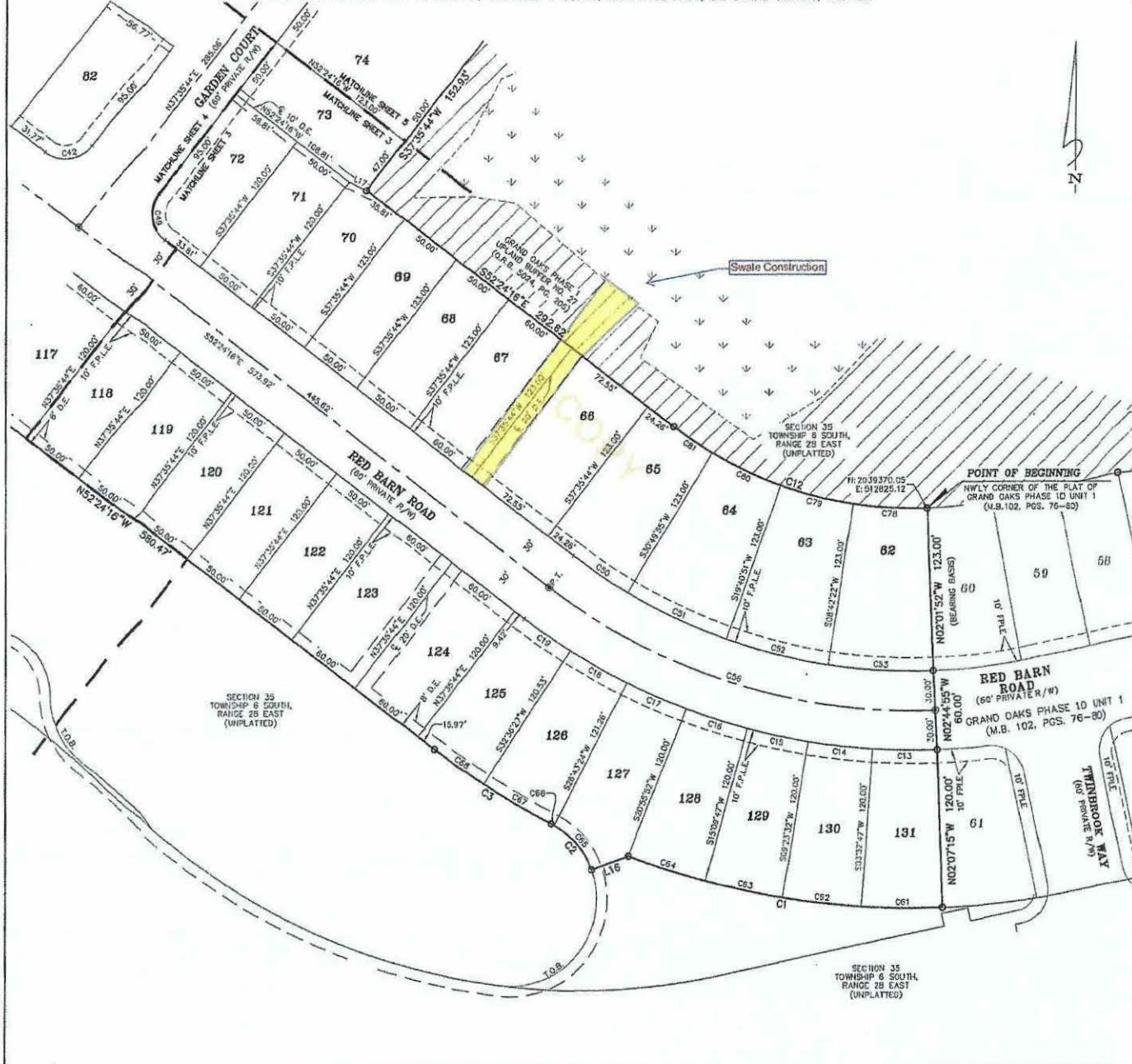


VICINITY MAP  
(NOT TO SCALE)

# Grand Oaks Phase 1D Unit 2

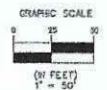
A PORTION OF SECTIONS 26 AND 35, TOWNSHIP 6 SOUTH, RANGE 28 EAST, ST. JOHNS COUNTY, FLORIDA

SHEET 3 OF 7 SHEETS  
SEE SHEET 2 FOR NOTES AND LEGEND



LINE TABLE		
LINE	BEARING	DISTANCE
L15	S89°34'22"W	29.42'
L17	N64°20'25"W	14.51'

CURVE TABLE					
CURVE	RADIUS	LENGTH	DELTA	BEARING	CHORD
C1	600.00'	241.40'	23°03'07"	S80°35'41"E	239.77'
C2	65.00'	47.82'	41°58'47"	N41°25'02"W	46.57'
C3	600.00'	104.70'	10°00'09"	S07°24'21"E	104.61'
C12	297.00'	205.41'	39°37'35"	S72°14'32"E	201.34'
C13	450.00'	48.17'	5°45'02"	S89°14'44"E	48.10'
C14	480.00'	48.27'	5°45'45"	S83°29'21"E	49.25'
C15	490.00'	48.35'	5°46'15"	S77°43'21"E	48.33'
C16	480.00'	48.32'	5°46'00"	S71°57'11"E	48.30'
C17	490.00'	48.52'	5°47'32"	S69°10'22"E	48.50'
C18	480.00'	49.29'	5°53'03"	S60°20'05"E	49.27'
C19	480.00'	41.78'	4°59'17"	S54°53'55"E	41.78'
C42	25.00'	39.27'	90°00'00"	N82°35'44"E	35.26'
C49	25.00'	39.27'	90°00'00"	S07°24'16"E	35.36'
C50	420.00'	49.58'	6°45'48"	S55°47'10"E	49.55'
C51	420.00'	81.74'	11°09'55"	S54°44'33"E	81.51'
C52	420.00'	80.46'	10°58'35"	S75°46'26"E	80.33'
C53	420.00'	78.70'	10°44'00"	S88°39'42"E	78.58'
C56	450.00'	311.60'	39°40'28"	S72°14'32"E	305.41'
C61	600.00'	60.22'	5°45'02"	S89°14'44"E	60.19'
C62	600.00'	60.34'	5°45'45"	S83°29'21"E	60.32'
C63	600.00'	60.43'	5°46'15"	S77°43'21"E	60.41'
C64	600.00'	60.40'	5°46'05"	S71°57'11"E	60.38'
C65	65.00'	44.95'	39°37'20"	N40°14'19"W	44.00'
C66	55.00'	2.07'	2°21'27"	N61°13'42"W	2.07'
C67	600.00'	59.04'	5°38'16"	S59°35'12"E	58.01'
C68	600.00'	45.71'	4°21'33"	S54°35'15"E	45.70'
C78	297.00'	55.65'	10°44'07"	S85°39'48"E	55.57'
C79	297.00'	56.90'	10°58'35"	S75°48'27"E	56.81'
C80	297.00'	57.80'	11°08'02"	S64°44'37"E	57.71'
C81	297.00'	35.06'	6°45'48"	S55°47'11"E	35.04'



**Clary & Associates**  
 PROFESSIONAL SURVEYORS & MAPPERS  
 LB NO. 5721  
 2530 CHURCH POINT ROAD  
 ANDERSONVILLE, FLORIDA 32227  
 (904) 200-2703  
 WWW.CLARYINC.COM



# Grand Oaks Phase 1D Unit 2

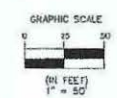
A PORTION OF SECTIONS 26 AND 35, TOWNSHIP 6 SOUTH, RANGE 28 EAST, ST. JOHNS COUNTY, FLORIDA

SHEET 4 OF 7 SHEETS  
SEE SHEET 2 FOR NOTES AND LEGEND



LINE TABLE		
LINE	BEARING	DISTANCE
L17	N04°20'20"W	14.51'
L18	N52°24'16"W	19.48'
L22	N07°49'03"E	30.55'
L24	S09°20'34"W	59.74'

CURVE TABLE					
CURVE	RADIUS	LENGTH	DELTA	BEARING	CHORD
C4	450.00'	407.47'	91°52'50"	S26°27'01"E	393.69'
C20	330.00'	24.00'	4°09'58"	S50°19'17"E	23.99'
C21	330.00'	48.27'	8°22'51"	S44°02'52"E	48.23'
C22	330.00'	48.28'	8°22'50"	S35°39'59"E	48.24'
C23	330.00'	48.57'	8°25'56"	S27°15'33"E	48.52'
C24	330.00'	48.41'	8°24'18"	S18°50'26"E	48.37'
C25	330.00'	48.92'	8°28'40"	S10°23'27"E	48.88'
C26	330.00'	32.37'	5°37'11"	S03°20'01"E	32.35'
C38	270.00'	60.74'	12°53'28"	S05°58'09"E	60.62'
C39	270.00'	84.72'	17°58'43"	S22°24'13"E	84.37'
C40	270.00'	90.55'	19°12'33"	S41°00'01"E	90.12'
C41	270.00'	8.47'	1°47'48"	S91°30'22"E	8.47'
C42	25.00'	39.27'	90°00'00"	N82°35'44"E	35.38'
C43	82.00'	37.37'	53°01'02"	S92°47'40"W	65.35'
C44	82.00'	101.63'	93°55'21"	N43°44'09"W	90.63'
C45	82.00'	57.89'	53°18'51"	N29°52'48"E	55.63'
C46	82.00'	60.30'	59°43'15"	N84°23'41"E	57.35'
C47	25.00'	13.97'	32°00'27"	N83°44'55"W	13.78'
C48	25.00'	18.61'	42°39'08"	S98°30'18"W	18.18'
C49	25.00'	39.27'	90°00'00"	S07°24'16"E	35.38'
C64	150.00'	15.57'	5°36'45"	S46°11'46"E	15.56'
C65	150.00'	8.47'	3°14'07"	S50°47'13"E	8.47'
C67	99.98'	52.74'	30°13'19"	S52°42'33"W	52.13'
C68	500.00'	271.60'	51°52'50"	S20°27'51"E	262.46'
C69	150.00'	24.04'	9°10'52"	S47°48'59"E	24.01'
C69	450.00'	40.88'	5°12'17"	S03°07'34"E	40.88'
C70	450.00'	88.25'	8°25'58"	S09°50'42"E	85.17'
C71	450.00'	65.61'	8°21'13"	S18°20'17"E	65.56'
C72	450.00'	65.91'	8°23'29"	S26°42'39"E	65.85'
C73	450.00'	65.61'	8°21'12"	S35°04'59"E	65.55'
C74	450.00'	65.60'	8°21'51"	S43°28'31"E	65.63'
C75	450.00'	37.55'	4°46'56"	S50°00'51"E	37.54'





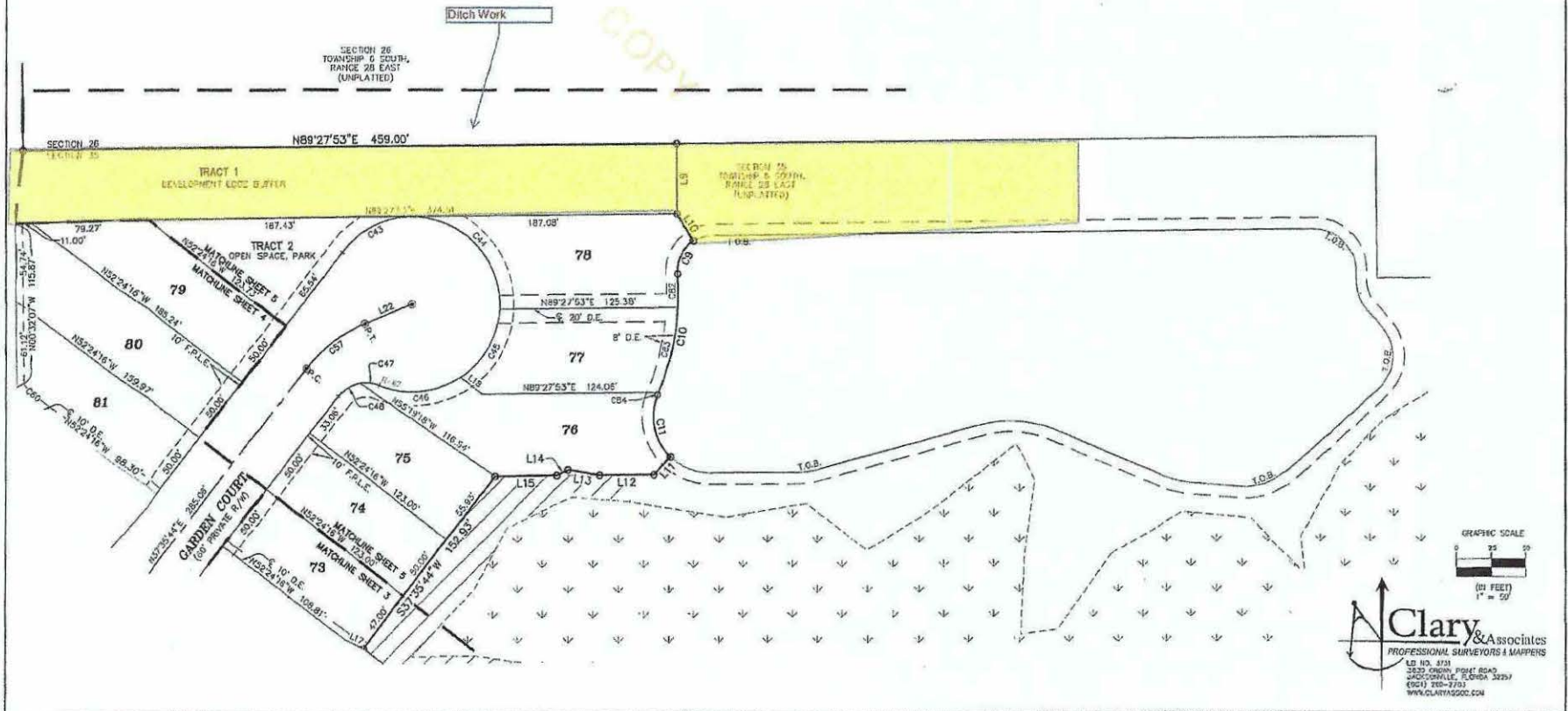
# Grand Oaks Phase 1D Unit 2

A PORTION OF SECTIONS 26 AND 35, TOWNSHIP 6 SOUTH, RANGE 28 EAST, ST. JOHNS COUNTY, FLORIDA

SHEET 5 OF 7 SHEETS  
SEE SHEET 2 FOR NOTES AND LEGEND

LINE	BEARING	DISTANCE
L9	S00°32'07"E	49.61'
L10	S37°17'30"E	22.50'
L11	S43°46'06"W	17.27'
L12	S89°27'53"W	37.91'
L13	S80°20'10"E	22.52'
L14	N80°58'20"E	8.40'
L15	S89°27'53"W	43.08'
L17	N64°20'25"W	14.51'
L18	N89°24'16"W	19.48'
L22	N87°49'03"E	36.35'

CURVE	RADIUS	LENGTH	DELTA	BEARING	CHORD
C9	25.00'	27.17'	62°15'31"	S26°34'45"W	25.85'
C10	182.00'	67.71'	27°36'42"	N09°15'21"E	86.86'
C11	40.00'	48.38'	69°17'36"	S11°35'06"E	45.48'
C43	62.00'	57.37'	83°01'02"	S62°47'40"W	55.35'
C44	62.00'	101.65'	93°52'21"	N43°44'09"W	90.63'
C45	62.00'	57.69'	53°18'31"	N29°52'46"E	55.63'
C46	62.00'	60.30'	59°43'15"	N84°23'41"E	57.95'
C47	25.00'	13.97'	32°00'27"	N83°44'55"W	13.78'
C48	25.00'	18.61'	42°39'08"	S58°55'18"W	18.18'
C51	99.99'	52.74'	301°3'19"	S52°42'23"W	52.13'
C60	180.00'	24.04'	9°10'52"	S47°46'50"E	24.01'
C82	182.00'	23.95'	7°32'16"	N00°46'51"W	23.93'
C83	182.00'	61.95'	19°30'04"	N12°44'20"E	81.65'
C84	182.00'	1.82'	6°34'19"	N22°46'32"E	1.82'

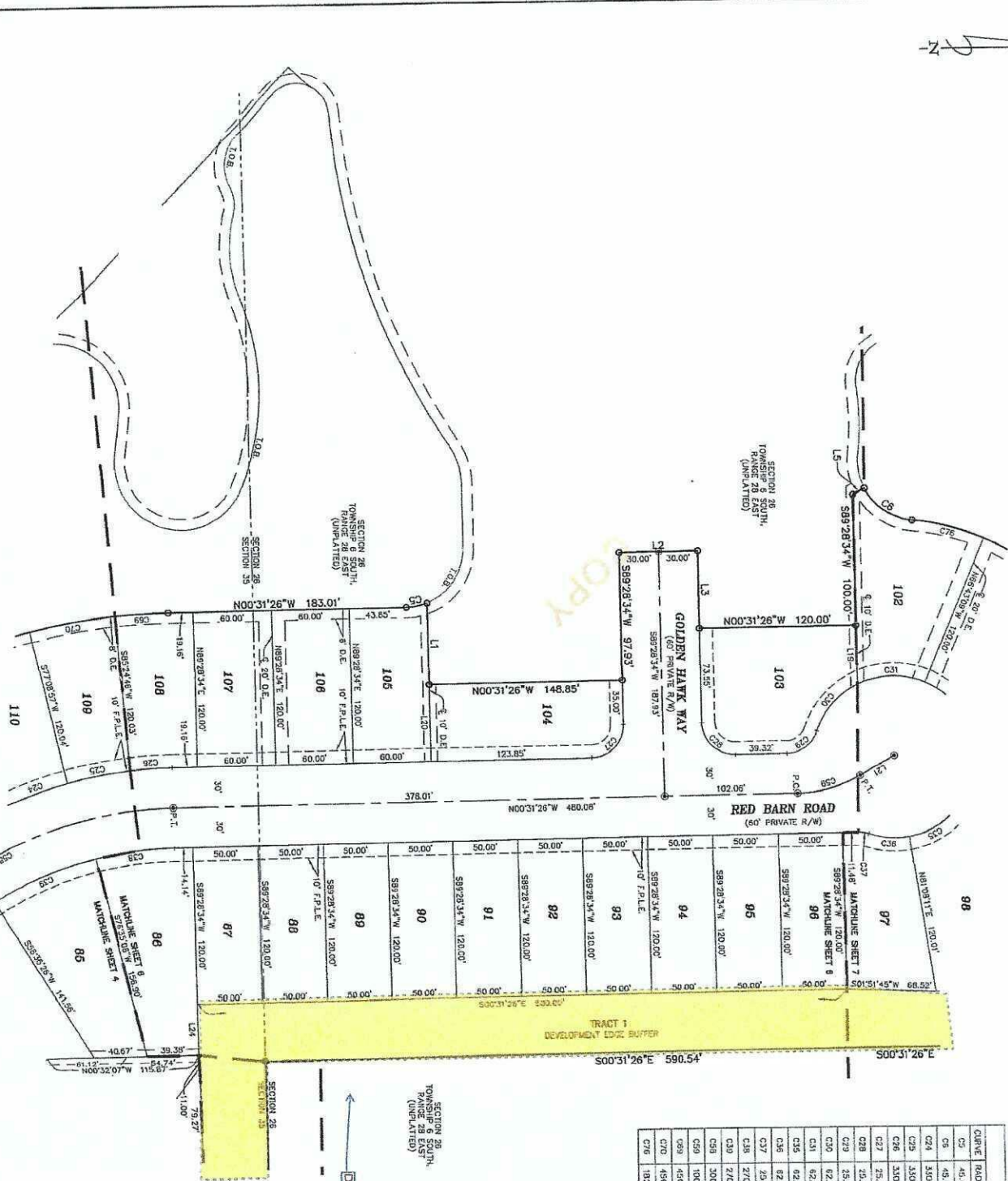


**Clary & Associates**  
 PROFESSIONAL SURVEYORS & MAPPERS  
 110 N. 4TH ST.  
 3332 ORCHARD PIKE #204  
 JACKSONVILLE, FLORIDA 32209  
 (904) 780-7700  
 WWW.CLARYASSOC.COM

# Grand Oaks Phase 1D Unit 2

A PORTION OF SECTIONS 26 AND 35, TOWNSHIP 6 SOUTH, RANGE 28 EAST, ST. JOHNS COUNTY, FLORIDA

SHEET 6 OF 7 SHEETS  
SEE SHEET 2 FOR NOTES AND LEGEND



CURVE TABLE

CURVE	RADIUS	BEIGHTH	DELTA	BEARING	CHORD
C1	46.00'	16.52'	270.00°	N11°02'21"W	16.42'
C2	46.00'	16.52'	270.00°	N44°19'57"E	44.31'
C3	46.00'	16.52'	270.00°	S19°50'28"E	48.37'
C4	330.00'	48.81'	92°41'	S19°50'28"E	48.37'
C5	330.00'	48.81'	92°41'	S19°50'28"E	48.88'
C6	330.00'	48.81'	92°41'	S19°50'28"E	48.88'
C7	330.00'	48.81'	92°41'	S19°50'28"E	48.88'
C8	330.00'	48.81'	92°41'	S19°50'28"E	48.88'
C9	330.00'	48.81'	92°41'	S19°50'28"E	48.88'
C10	330.00'	48.81'	92°41'	S19°50'28"E	48.88'
C11	330.00'	48.81'	92°41'	S19°50'28"E	48.88'
C12	330.00'	48.81'	92°41'	S19°50'28"E	48.88'
C13	330.00'	48.81'	92°41'	S19°50'28"E	48.88'
C14	330.00'	48.81'	92°41'	S19°50'28"E	48.88'
C15	330.00'	48.81'	92°41'	S19°50'28"E	48.88'
C16	330.00'	48.81'	92°41'	S19°50'28"E	48.88'
C17	330.00'	48.81'	92°41'	S19°50'28"E	48.88'
C18	330.00'	48.81'	92°41'	S19°50'28"E	48.88'
C19	330.00'	48.81'	92°41'	S19°50'28"E	48.88'
C20	330.00'	48.81'	92°41'	S19°50'28"E	48.88'
C21	330.00'	48.81'	92°41'	S19°50'28"E	48.88'
C22	330.00'	48.81'	92°41'	S19°50'28"E	48.88'
C23	330.00'	48.81'	92°41'	S19°50'28"E	48.88'
C24	330.00'	48.81'	92°41'	S19°50'28"E	48.88'
C25	330.00'	48.81'	92°41'	S19°50'28"E	48.88'
C26	330.00'	48.81'	92°41'	S19°50'28"E	48.88'
C27	330.00'	48.81'	92°41'	S19°50'28"E	48.88'
C28	330.00'	48.81'	92°41'	S19°50'28"E	48.88'
C29	330.00'	48.81'	92°41'	S19°50'28"E	48.88'
C30	330.00'	48.81'	92°41'	S19°50'28"E	48.88'
C31	330.00'	48.81'	92°41'	S19°50'28"E	48.88'
C32	330.00'	48.81'	92°41'	S19°50'28"E	48.88'
C33	330.00'	48.81'	92°41'	S19°50'28"E	48.88'
C34	330.00'	48.81'	92°41'	S19°50'28"E	48.88'
C35	330.00'	48.81'	92°41'	S19°50'28"E	48.88'
C36	330.00'	48.81'	92°41'	S19°50'28"E	48.88'
C37	330.00'	48.81'	92°41'	S19°50'28"E	48.88'
C38	330.00'	48.81'	92°41'	S19°50'28"E	48.88'
C39	330.00'	48.81'	92°41'	S19°50'28"E	48.88'
C40	330.00'	48.81'	92°41'	S19°50'28"E	48.88'
C41	330.00'	48.81'	92°41'	S19°50'28"E	48.88'
C42	330.00'	48.81'	92°41'	S19°50'28"E	48.88'
C43	330.00'	48.81'	92°41'	S19°50'28"E	48.88'
C44	330.00'	48.81'	92°41'	S19°50'28"E	48.88'
C45	330.00'	48.81'	92°41'	S19°50'28"E	48.88'
C46	330.00'	48.81'	92°41'	S19°50'28"E	48.88'
C47	330.00'	48.81'	92°41'	S19°50'28"E	48.88'
C48	330.00'	48.81'	92°41'	S19°50'28"E	48.88'
C49	330.00'	48.81'	92°41'	S19°50'28"E	48.88'
C50	330.00'	48.81'	92°41'	S19°50'28"E	48.88'
C51	330.00'	48.81'	92°41'	S19°50'28"E	48.88'
C52	330.00'	48.81'	92°41'	S19°50'28"E	48.88'
C53	330.00'	48.81'	92°41'	S19°50'28"E	48.88'
C54	330.00'	48.81'	92°41'	S19°50'28"E	48.88'
C55	330.00'	48.81'	92°41'	S19°50'28"E	48.88'
C56	330.00'	48.81'	92°41'	S19°50'28"E	48.88'
C57	330.00'	48.81'	92°41'	S19°50'28"E	48.88'
C58	330.00'	48.81'	92°41'	S19°50'28"E	48.88'
C59	330.00'	48.81'	92°41'	S19°50'28"E	48.88'
C60	330.00'	48.81'	92°41'	S19°50'28"E	48.88'
C61	330.00'	48.81'	92°41'	S19°50'28"E	48.88'
C62	330.00'	48.81'	92°41'	S19°50'28"E	48.88'
C63	330.00'	48.81'	92°41'	S19°50'28"E	48.88'
C64	330.00'	48.81'	92°41'	S19°50'28"E	48.88'
C65	330.00'	48.81'	92°41'	S19°50'28"E	48.88'
C66	330.00'	48.81'	92°41'	S19°50'28"E	48.88'
C67	330.00'	48.81'	92°41'	S19°50'28"E	48.88'
C68	330.00'	48.81'	92°41'	S19°50'28"E	48.88'
C69	330.00'	48.81'	92°41'	S19°50'28"E	48.88'
C70	330.00'	48.81'	92°41'	S19°50'28"E	48.88'
C71	330.00'	48.81'	92°41'	S19°50'28"E	48.88'
C72	330.00'	48.81'	92°41'	S19°50'28"E	48.88'
C73	330.00'	48.81'	92°41'	S19°50'28"E	48.88'
C74	330.00'	48.81'	92°41'	S19°50'28"E	48.88'
C75	330.00'	48.81'	92°41'	S19°50'28"E	48.88'
C76	330.00'	48.81'	92°41'	S19°50'28"E	48.88'

LINE TABLE

LINE	BEARING	DISTANCE
L1	S89°28'34"E	61.00'
L2	N00°31'26"W	60.00'
L3	S89°28'34"E	60.00'
L4	N27°01'04"W	10.03'
L5	N89°28'34"E	45.00'
L6	S89°28'34"E	60.00'
L7	S28°27'45"E	28.98'
L8	S89°28'34"W	31.74'

**Acary & Associates**  
 PROFESSIONAL SURVEYORS & ENGINEERS  
 1100 W. 23rd St., Suite 200  
 Ft. Lauderdale, FL 33311  
 (954) 233-7700  
 WWW.ACARYANDASSOCIATES.COM

GRAPHIC SCALE  
 0 25 50  
 (1" = 50')



# Grand Oaks Phase 1D Unit 2

A PORTION OF SECTIONS 26 AND 35, TOWNSHIP 6 SOUTH, RANGE 28 EAST, ST. JOHNS COUNTY, FLORIDA

SHEET 7 OF 7 SHEETS  
SEE SHEET 2 FOR NOTES AND LEGEND



CURVE TABLE					
CURVE	RADIUS	LEHDM	DELTA	BEARING	CHORD
C5	45.00'	45.84'	58°06'49"	N34°15'57"E	43.71'
C7	182.00'	147.32'	40°22'48"	S28°23'58"W	143.33'
C8	30.00'	22.34'	42°59'42"	N30°15'28"E	21.83'
C28	25.00'	35.27'	50°00'00"	N44°28'34"E	35.36'
C29	25.00'	31.08'	71°13'21"	N36°08'06"W	28.11'
C30	62.00'	49.48'	45°43'25"	S42°53'04"E	48.18'
C31	62.00'	53.35'	49°18'12"	S0°22'16"E	51.72'
C32	62.00'	46.00'	42°30'23"	S44°32'02"W	44.95'
C33	62.00'	38.42'	35°30'06"	S87°32'17"W	37.80'
C34	62.00'	36.71'	33°50'35"	N81°14'53"W	36.18'
C35	62.00'	37.35'	34°30'50"	N27°31'41"W	36.79'
C36	62.00'	31.08'	29°16'35"	N04°22'01"E	31.34'
C37	25.00'	8.92'	19°31'45"	S09°14'26"W	8.48'
C39	100.00'	50.91'	28°58'19"	N14°59'36"W	49.97'
C76	182.00'	57.40'	18°04'18"	S14°14'42"W	57.17'
C77	182.00'	89.92'	28°18'28"	S37°26'05"W	89.01'

LINE TABLE		
LINE	BEARING	DISTANCE
L3	N89°28'34"E	59.38'
L5	N77°01'09"W	10.03'
L6	N80°14'44"E	11.52'
L7	N77°28'01"E	16.48'
L8	S89°10'52"E	42.50'
L19	N89°28'34"E	45.00'
L21	S28°27'45"E	29.99'
L23	S00°31'26"E	4.75'

